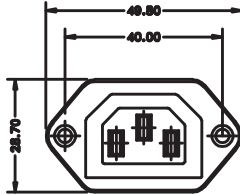
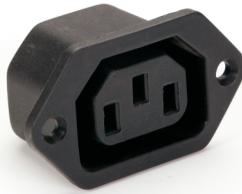


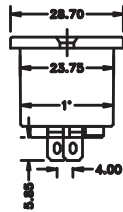
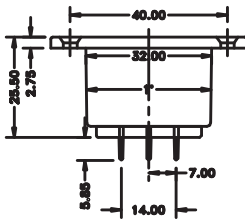
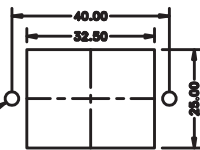
POWER ENTRY COMPONENTS.

NAMOLECTRIC CONTROLS

SERIES : EMO-21



PANEL CUT OUT



Note: All Dimension are in mm

TECHNICAL SPECIFICATION :

PARAMETERS	SERIES	EMO-21
Mounting style		Screw Mounting Mains Outlet
Current Rating		10A 250V AC
Insulation Resistance		100 M Ohms min.
Dielectric Strength		1KV
Moulding Material(Housing)		Polyamide
Current Carrying Parts(Contacts)		Brass, Nickel Plated
Current Carrying Parts(Rear Tag)		----